

FIRE PROTECTION GUIDE 1/STEEL

Loadbearing Steel Beams & Columns
Glue free/mechanical fix solution

1. DETERMINE THE NEEDED FIRE RESISTANCE PERIOD

The fire resistance requirement for a building is defined in terms of fire resistance period and stated in terms of minutes (15, 30, 45, 60, 75, 90, 120, etc. up to 240 minutes). This information is usually given in local building regulations and it depends on the height, occupants and type of the building. In practice it means that the building frame has to maintain its load bearing capacity during the fire until everybody has left the burning building. It is the responsibility of the design engineer, using design codes such as EN1993-1-2, to specify the appropriate limiting or failure temperature for a given section.

Different load bearing materials have different fire resistance periods. These materials are usually tested by using

a standard fire curve which demonstrates development of a real fire. The temperature in a standard fire rises rather quickly and then increases indefinitely.

Fire resistance test results are expressed in terms of time of failure against one or more of three criteria:

- Load bearing capacity (R)
- Integrity (passage of hot gases/flames) (E)
- Insulation (temperature raise on the cold side of the structural element, usually max. 140 °C) (I)

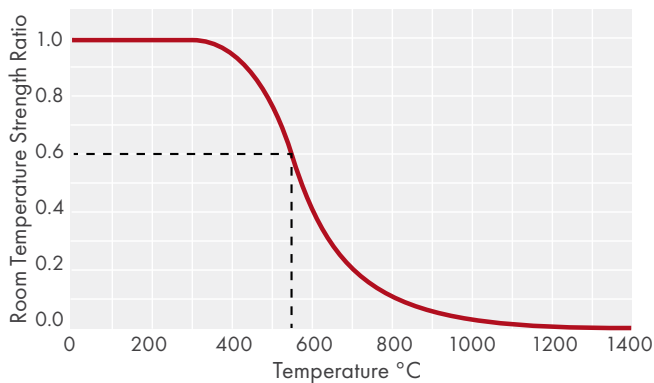
In some building constructions all of these are needed but for the steel frames only load bearing capacity is required e.g. R120.

2. DETERMINE CRITICAL TEMPERATURE AND THE SECTION FACTOR OF THE STEEL

All materials lose their strength as they get hot.

- Fully loaded steel beam exposed on four sides, fails at 550 °C, regardless of steel grade.
- Fully loaded beam exposed on three sides, fails at 620 °C.
⇒ Temperature 450–500 °C is commonly used as rather safe limit value.

Fires in buildings regularly exceed 1000 degrees centigrade within a relatively short period of time (30–60 minutes), yet heavily loaded steel loses its design margin of safety, about 40% at temperatures around 550°C regardless of the grade. As the temperature rises further the loss of strength is rapid and significant.



The design of fire protection is therefore based on this limiting temperature for elements exposed to fire on four sides. The aim is to keep the steel temperature below its critical temperature.

The rate of increase in temperature of a steel cross-section is determined by the ratio of the heated surface area (A_m) to the volume (V). This ratio, (A_m/V), has units of m^{-1} and is known as the section factor. Members with low section factors will heat up more slowly. The section factor is thus a measure of the rate at which a section will heat up in a fire and the higher its value, the greater will be the protection thickness required.

A steel section with a large surface area (A) (m^2/m) will receive more heat than one with a smaller surface area. Also, the greater the volume (V) (m^3/m) of the section, the greater is the heat sink. It follows therefore, that a small thick section will be slower to increase in temperature than a large thin one.

Large A
Small V
⇒ fast heating



Small A
Large V
⇒ slow heating



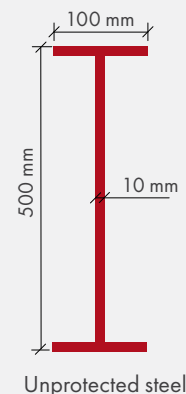
In calculating the section factor values the full volume, V , is used whether the section is exposed on three or four sides as entire steel section will be receiving heat. A , however, is the exposed surface area and that depends on the configuration of the fire protection.

Example of calculating section factor A_m/V

- Surface area (A_m) of one meter long beam is 1,38 m^2
- Volume (V) of one meter long beam is 0,0068 m^3

$$A/V = 1,38 / 0,0068 = 203 \text{ m}^{-1}$$

Section factors vary generally from 25 m^{-1} for very large sections to over 300 m^{-1} for small, slender sections.

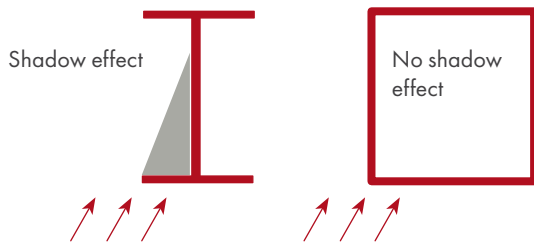


Unprotected steel

SHADOW EFFECT

In case of unprotected steel profiles, a section factor including the shadow effect can be considered. Shadow effect is caused by local shielding of irradiative heat transfer, due to shape of steel profile, e.g.

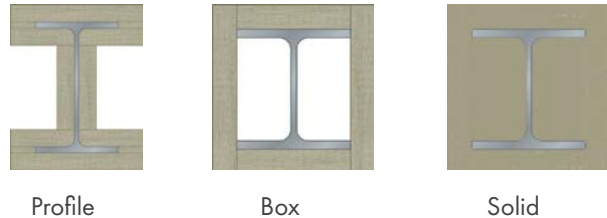
- I-profiles: $k_{\text{shadow}} = 0,9 [A_m/V]_{\text{box}} / [A_m/V]$
- □-profiles: $k_{\text{shadow}} = 1$
- Insulated profiles = 1 (all)



Whilst the section factor can be calculated it is more usual to refer different steel manufacturers profile information where this value is given.

3. DETERMINE PROTECTION METHOD

The most practical way to limit the rise in steel temperature is to insulate it from the fire. In considering any fire protection system it is important to distinguish between profile, box and solid methods of application.



Sprayed materials would normally be applied to follow the profile of the section. Special insulating concretes can be used to form solid protection. Board materials would normally be used to form a box around the section or with higher profiles following the profile.

The type of insulation has to be taken into account when designing steel structures because insulation also conducts heat. In case of protected members the section factor A_p/V is multiplied by a factor, allowing for the thermal conductivity of the protection material, divided by its thickness λ_p/d_p .

$$(A_p/V) \times (\lambda_p/d_p)$$

Summary:

The thickness of fire protection insulation needed depends on

- Duration of fire resistance specified in national regulations (R30, R60, R90, R120...)
- Critical temperature and the section factor of the steel
 - Perimeter of steel section exposed to fire (A)
 - Shape and size of steel section (total volume, V)
- Type of protection used

PAROC FIRE STEEL PROTECT

Design tools for prediction of stone wool fire protection board thickness have been made for 30–240 minutes endurance time in a Standard Fire Exposure (R30–R240) for open and closed (I/H and RHS) steel sections.

Based on graphical or tabulated design values PAROC Fire Steel Protect board thickness can be chosen as a function of

- fire endurance time,
- section factor A/V for the member and
- Critical steel temperature ranging from 300–700°C

In case of "box" protection, the surface area is taken as the sum of the inside dimensions of the smallest possible rectangular or square encasement.

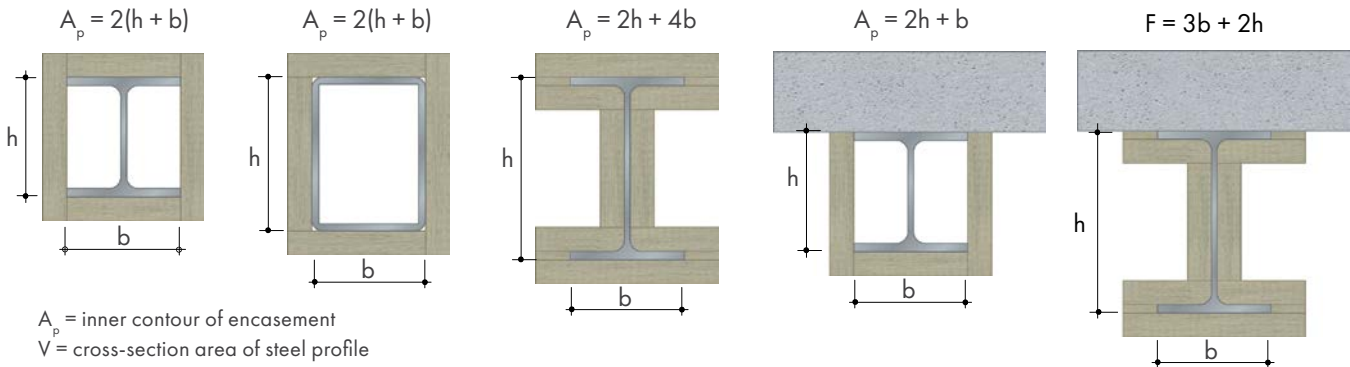
RHS = rectangular hollow section

A_p/V – SECTION FACTOR FOR PROTECTED MEMBERS

Section factor for insulated steel members:

$$(m^{-1}) = A/V$$

When I profile has a greater height than 450 mm the insulation shall be installed following the profile.



Calculation example

Steel beam, encased on three sides

- Serial size: 406 mm x 178mm x 54 kg/m
- Actual size: 402,6 mm x 177,6 mm
- $V = 0,00684 m^3$

$$A = 2h + b \rightarrow 402,6 + 402,6 + 177,6 = 982,8 \text{ mm} \times 1000 \text{ mm} = 0,9828 m^2$$

$$A/V = 0,9828 m^2 / 0,00684 m^3 = 143,7 m^{-1} = \mathbf{144 m^{-1}}$$

or

If the mass per meter is known then the A/V value can be calculated:

$$A/V = (\rho \times A)/W = 7850 \text{ kg/m}^3 \times 0,9828 m^2 / 54 \text{ kg/m} = \mathbf{143 m^{-1}}$$

W = Mass of steel section per meter (kg/m)

(Nominal density of steel is 7850 kg/m³, The value of W can be obtained either from steelwork tables or by accurate measurement.)

Once the specific A/V value is known, the required thickness of the PAROC Fire Steel Protect board for the defined fire protection can be found from the A/V tables.

You can also use ready-calculated A_p/V values from the profile manufacturers:

- 1 Find the section factor A_p/V by using data for the steel profile data for the steel profile from the steel supplier. For example section factor for four sides exposed HE 140 B profile is 130 m^{-1}
- 2 In the following figures you can find the fire class and the needed thickness of insulation. Choose the table based on critical temperature, check the needed fire resistance time and read the PAROC Fire Steel Protect thickness from the section factor row. For example if critical temperature for the steel profile is 450°C and required fire resistance time 30 minutes, you need 20 mm PAROC Fire Steel Protect fire protection for the section factor 130 m^{-1}

HEA-profile		HEB-profile		HEM-profile	
a	b	c	d	e	f
a	b	c	d	e	f
A_p/V (m^{-1})	A_p/V (m^{-1})	A_p/V (m^{-1})	A_p/V (m^{-1})	A_p/V (m^{-1})	A_p/V (m^{-1})
HE 100 A	184	138	HE 100 B	154	115
HE 120 A	185	137	HE 120 B	141	106
HE 140 A	174	129	HE 140 B	130	98
HE 160 A	161	120	HE 160 B	118	89
HE 180 A	155	115	HE 180 B	110	83
HE 200 A	145	108	HE 200 B	103	77
HE 220 A	134	100	HE 220 B	97	73
HE 240 A	122	91	HE 240 B	91	68
HE 260 A	118	88	HE 260 B	88	66
HE 280 A	113	84	HE 280 B	85	64
HE 300 A	105	78	HE 300 B	81	60
HE 320 A	98	74	HE 320 B	77	58
HE 340 A	94	72	HE 340 B	75	57
HE 360 A	91	70	HE 360 B	73	57
HE 400 A	87	68	HE 400 B	71	56
HE 450 A	83	66	HE 450 B	69	55
HE 500 A	80	65	HE 500 B	67	55
HE 550 A	79	65	HE 550 B	67	55
HE 600 A	79	65	HE 600 B	67	56
HE 650 A	79	65	HE 650 B	66	56

Given insulation thicknesses in the tables are based on a designed program of fire tests on both loaded and unloaded specimens and a mathematical procedure applied to the results of the tests. Test programs were designed to determine both the insulation characteristics of a fire protection material and its physical performance under fire conditions for a range of steel sizes. Steel sections protected with PAROC Fire Steel Protect were tested and calculated according to EN 1363-1:2012 and ENV 13381-4:2013 in the Danish Institute of Fire and Security Technology (DBI), Denmark. This system has a European Technical Approval issued by VTT Expert Services (ETA 18/0265).

INSULATION THICKNESS FOR R30 STEEL STRUCTURE A/V 130, CRITICAL STEEL TEMPERATURE 450°C

Design temperature [$^\circ\text{C}$]	Fire resistance period 30 minutes								
	300	350	400	450	500	550	600	650	700
Section factor [m^{-1}]	Thickness in mm of fire protection material to maintain steel temperature below design temperature								
47	20	20	20	20	20	20	20	20	20
50	20	20	20	20	20	20	20	20	20
55	20	20	20	20	20	20	20	20	20
60	20	20	20	20	20	20	20	20	20
65	20	20	20	20	20	20	20	20	20
70	20	20	20	20	20	20	20	20	20
75	20	20	20	20	20	20	20	20	20
80	20	20	20	20	20	20	20	20	20
85	20	20	20	20	20	20	20	20	20
90	20	20	20	20	20	20	20	20	20
95	20	20	20	20	20	20	20	20	20
100	20	20	20	20	20	20	20	20	20
105	20	20	20	20	20	20	20	20	20
110	20	20	20	20	20	20	20	20	20
115	20	20	20	20	20	20	20	20	20
120	20	20	20	20	20	20	20	20	20
125	20	20	20	20	20	20	20	20	20
130	20	20	20	20	20	20	20	20	20
135	20	20	20	20	20	20	20	20	20
140	20	20	20	20	20	20	20	20	20
145	20	20	20	20	20	20	20	20	20
150	20	20	20	20	20	20	20	20	20
155	20	20	20	20	20	20	20	20	20
160	20	20	20	20	20	20	20	20	20
165	20	20	20	20	20	20	20	20	20
170	20	20	20	20	20	20	20	20	20
175	20	20	20	20	20	20	20	20	20
180	20	20	20	20	20	20	20	20	20
185	20	20	20	20	20	20	20	20	20
190	20	20	20	20	20	20	20	20	20
195	20	20	20	20	20	20	20	20	20
200	25	20	20	20	20	20	20	20	20
205	25	20	20	20	20	20	20	20	20
210	25	20	20	20	20	20	20	20	20
215	25	20	20	20	20	20	20	20	20
220	25	20	20	20	20	20	20	20	20
225	25	20	20	20	20	20	20	20	20
230	25	20	20	20	20	20	20	20	20
235	25	20	20	20	20	20	20	20	20
240	25	20	20	20	20	20	20	20	20
245	30	20	20	20	20	20	20	20	20
250	30	20	20	20	20	20	20	20	20
255	30	20	20	20	20	20	20	20	20
260	30	20	20	20	20	20	20	20	20
265	30	20	20	20	20	20	20	20	20
270	30	20	20	20	20	20	20	20	20
275	30	20	20	20	20	20	20	20	20
280	30	20	20	20	20	20	20	20	20
281	30	25	20	20	20	20	20	20	20

ETA approved !

OPEN AND CLOSED STEEL SECTIONS

INSULATION THICKNESS FOR R60 STEEL STRUCTURE

Fire resistance period 60 minutes									
Design temperature [°C]	300	350	400	450	500	550	600	650	700
Section factor [m ⁻¹]	Thickness in mm of fire protection material to maintain steel temperature below design temperature								
47	20	20	20	20	20	20	20	20	20
50	20	20	20	20	20	20	20	20	20
55	20	20	20	20	20	20	20	20	20
60	20	20	20	20	20	20	20	20	20
65	20	20	20	20	20	20	20	20	20
70	20	20	20	20	20	20	20	20	20
75	20	20	20	20	20	20	20	20	20
80	20	20	20	20	20	20	20	20	20
85	20	20	20	20	20	20	20	20	20
90	25	20	20	20	20	20	20	20	20
95	25	20	20	20	20	20	20	20	20
100	25	20	20	20	20	20	20	20	20
105	30	20	20	20	20	20	20	20	20
110	30	25	20	20	20	20	20	20	20
115	30	25	20	20	20	20	20	20	20
120	30	25	20	20	20	20	20	20	20
125	40	25	20	20	20	20	20	20	20
130	40	30	20	20	20	20	20	20	20
135	40	30	20	20	20	20	20	20	20
140	40	30	25	20	20	20	20	20	20
145	40	30	25	20	20	20	20	20	20
150	40	30	25	20	20	20	20	20	20
155	40	40	25	20	20	20	20	20	20
160	40	40	30	20	20	20	20	20	20
165	40	40	30	20	20	20	20	20	20
170	50	40	30	25	20	20	20	20	20
175	50	40	30	25	20	20	20	20	20
180	50	40	30	25	20	20	20	20	20
185	50	40	30	25	20	20	20	20	20
190	50	40	30	25	20	20	20	20	20
195	50	40	40	25	20	20	20	20	20
200	50	40	40	25	20	20	20	20	20
205	50	40	40	30	20	20	20	20	20
210	50	40	40	30	25	20	20	20	20
215	50	50	40	30	25	20	20	20	20
220	60	50	40	30	25	20	20	20	20
225	60	50	40	30	25	20	20	20	20
230	60	50	40	30	25	20	20	20	20
235	60	50	40	30	25	20	20	20	20
240	60	50	40	30	25	20	20	20	20
245	60	50	40	30	25	20	20	20	20
250	60	50	40	30	25	20	20	20	20
255	60	50	40	40	25	20	20	20	20
260	60	50	40	40	30	25	20	20	20
265	60	50	40	40	30	25	20	20	20
270	60	50	40	40	30	25	20	20	20
275	0	50	40	40	30	25	20	20	20
280	0	50	40	40	30	25	20	20	20
281	0	50	40	40	30	25	20	20	20

INSULATION THICKNESS FOR R90 STEEL STRUCTURE

Fire resistance period 90 minutes									
Design temperature [°C]	300	350	400	450	500	550	600	650	700
Section factor [m ⁻¹]	Thickness in mm of fire protection material to maintain steel temperature below design temperature								
47	20	20	20	20	20	20	20	20	20
50	20	20	20	20	20	20	20	20	20
55	20	20	20	20	20	20	20	20	20
60	25	20	20	20	20	20	20	20	20
65	25	20	20	20	20	20	20	20	20
70	30	25	20	20	20	20	20	20	20
75	30	25	20	20	20	20	20	20	20
80	40	30	20	20	20	20	20	20	20
85	40	30	25	20	20	20	20	20	20
90	40	30	25	20	20	20	20	20	20
95	40	40	30	20	20	20	20	20	20
100	40	40	30	25	20	20	20	20	20
105	50	40	30	25	20	20	20	20	20
110	50	40	40	30	20	20	20	20	20
115	50	40	40	30	25	20	20	20	20
120	50	50	40	30	25	20	20	20	20
125	50	50	40	30	25	20	20	20	20
130	50	50	40	40	30	20	20	20	20
135	60	50	40	40	30	25	20	20	20
140	60	50	40	40	30	25	20	20	20
145	60	50	50	40	30	25	20	20	20
150	60	50	50	40	40	25	20	20	20
155	60	60	50	40	40	30	25	20	20
160	60	60	50	40	40	30	25	20	20
165	0	60	50	40	40	30	25	20	20
170	0	60	50	40	40	30	25	20	20
175	0	60	50	50	40	30	25	20	20
180	0	60	50	50	40	30	25	25	20
185	0	60	50	50	40	40	30	25	20
190	0	60	50	50	40	40	30	25	20
195	0	60	60	50	40	40	30	25	20
200	0	0	60	50	40	40	30	25	20
205	0	0	60	50	40	40	30	25	20
210	0	0	60	50	40	40	30	25	20
215	0	0	60	50	40	40	30	25	25
220	0	0	60	50	40	40	30	30	25
225	0	0	60	50	50	40	30	30	25
230	0	0	60	50	50	40	40	30	25
235	0	0	60	50	50	40	40	30	25
240	0	0	60	50	50	40	40	30	25
245	0	0	60	50	50	40	40	30	25
250	0	0	60	50	50	40	40	30	25
255	0	0	60	50	50	40	40	30	25
260	0	0	60	50	50	40	40	30	25
265	0	0	60	60	50	40	40	30	25
270	0	0	0	60	50	40	40	30	30
275	0	0	0	60	50	40	40	30	30
280	0	0	0	60	50	40	40	30	30
281	0	0	0	60	50	40	40	30	30

INSULATION THICKNESS FOR R120 STEEL STRUCTURE

Fire resistance period 120 minutes									
Design temperature [°C]	300	350	400	450	500	550	600	650	700
Section factor [m ⁻¹]	Thickness in mm of fire protection material to maintain steel temperature below design temperature								
47	25	20	20	20	20	20	20	20	20
50	30	25	20	20	20	20	20	20	20
55	30	25	20	20	20	20	20	20	20
60	40	30	25	20	20	20	20	20	20
65	40	40	30	20	20	20	20	20	20
70	40	40	30	25	20	20	20	20	20
75	50	40	40	30	20	20	20	20	20
80	50	40	40	30	25	20	20	20	20
85	50	50	40	40	30	20	20	20	20
90	50	50	40	40	30	25	20	20	20
95	60	50	50	40	40	25	20	20	20
100	60	50	50	40	40	30	20	20	20
105	60	60	50	40	40	30	25	20	20
110	60	60	50	50	40	40	25	20	20
115	0	60	50	50	40	40	30	25	20
120	0	60	60	50	40	40	30	25	20
125	0	60	60	50	50	40	30	25	20
130	0	0	60	50	50	40	40	30	25
135	0	0	60	50	50	40	40	30	25
140	0	0	60	60	50	40	40	30	25
145	0	0	60	60	50	40	40	30	25
150	0	0	60	60	50	50	40	40	30
155	0	0	0	60	50	50	40	40	30
160	0	0	0	60	50	50	40	40	30
165	0	0	0	60	50	50	40	40	30
170	0	0	0	60	50	50	40	40	30
175	0	0	0	60	60	50	40	40	30
180	0	0	0	60	60	50	40	40	40
185	0	0	0	60	60	50	50	40	40
190	0	0	0	0	60	50	50	40	40
195	0	0	0	0	60	50	50	40	40
200	0	0	0	0	60	50	50	40	40
205	0	0	0	0	60	50	50	40	40
210	0	0	0	0	60	50	50	40	40
215	0	0	0	0	60	50	50	40	40
220	0	0	0	0	60	50	50	40	40
225	0	0	0	0	60	50	50	40	40
230	0	0	0	0	60	60	50	40	40
235	0	0	0	0	60	60	50	40	40
240	0	0	0	0	60	60	50	50	40
245	0	0	0	0	60	60	50	50	40
250	0	0	0	0	60	60	50	50	40
255	0	0	0	0	60	60	50	50	40
260	0	0	0	0	60	60	50	50	40
265	0	0	0	0	0	60	50	50	40
270	0	0	0	0	0	60	50	50	40
275	0	0	0	0	0	60	50	50	40
280	0	0	0	0	0	60	50	50	40
281	0	0	0	0	0	60	50	50	40

INSULATION THICKNESS FOR R150 STEEL STRUCTURE

Fire resistance period 150 minutes									
Design temperature [°C]	300	350	400	450	500	550	600	650	700
Section factor [m ⁻¹]	Thickness in mm of fire protection material to maintain steel temperature below design temperature								
47	40	30	25	20	20	20	20	20	20
50	40	30	30	20	20	20	20	20	20
55	40	40	30	25	20	20	20	20	20
60	50	40	40	30	25	20	20	20	20
65	50	50	40	40	30	20	20	20	20
70	50	50	50	40	40	25	20	20	20
75	60	50	50	40	40	30	25	20	20
80	60	60	50	50	40	40	30	20	20
85	60	60	50	50	50	40	30	25	20
90	0	60	60	50	50	40	40	30	20
95	0	60	60	50	50	40	40	30	25
100	0	0	60	60	50	50	40	40	25
105	0	0	60	60	50	50	40	40	30
110	0	0	0	60	60	50	50	40	30
115	0	0	0	60	60	50	50	40	40
120	0	0	0	0	60	50	50	40	40
125	0	0	0	0	60	60	50	40	40
130	0	0	0	0	60	60	50	50	40
135	0	0	0	0	60	60	50	50	40
140	0	0	0	0	60	60	50	50	40
145	0	0	0	0	0	60	50	50	40
150	0	0	0	0	0	60	50	50	40
155	0	0	0	0	0	60	60	50	50
160	0	0	0	0	0	60	60	50	50
165	0	0	0	0	0	60	60	50	50
170	0	0	0	0	0	60	60	50	50
175	0	0	0	0	0	60	60	50	50
180	0	0	0	0	0	0	60	50	50
185	0	0	0	0	0	0	60	50	50
190	0	0	0	0	0	0	60	50	50
195	0	0	0	0	0	0	60	50	50
200	0	0	0	0	0	0	60	60	50
205	0	0	0	0	0	0	60	60	50
210	0	0	0	0	0	0	60	60	50
215	0	0	0	0	0	0	60	60	50
220	0	0	0	0	0	0	60	60	50
225	0	0	0	0	0	0	60	60	50
230	0	0	0	0	0	0	60	60	50
235	0	0	0	0	0	0	60	60	50
240	0	0	0	0	0	0	60	60	50
245	0	0	0	0	0	0	60	60	50
250	0	0	0	0	0	0	60	60	50
255	0	0	0	0	0	0	60	60	50
260	0	0	0	0	0	0	0	60	50
265	0	0	0	0	0	0	0	60	50
270	0	0	0	0	0	0	0	60	50
275	0	0	0	0	0	0	0	60	50
280	0	0	0	0	0	0	0	60	50
281	0	0	0	0	0	0	0	60	50

INSULATION THICKNESS FOR R180 STEEL STRUCTURE

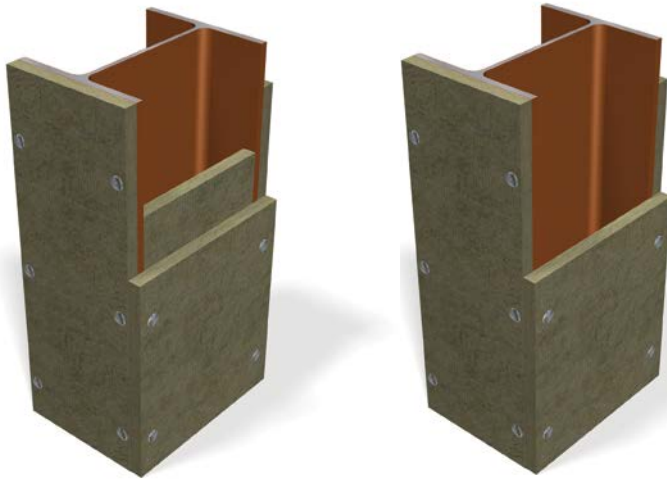
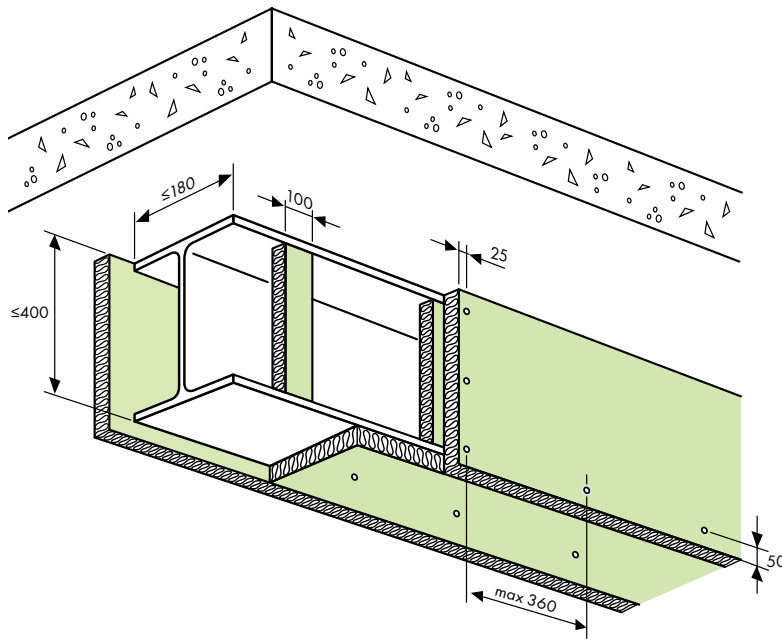
Fire resistance period 180 minutes									
Design temperature [°C]	300	350	400	450	500	550	600	650	700
Section factor [m ⁻¹]	Thickness in mm of fire protection material to maintain steel temperature below design temperature								
47	40	40	40	30	20	20	20	20	20
50	50	40	40	40	25	20	20	20	20
55	50	50	40	40	40	25	20	20	20
60	60	50	50	50	40	30	25	20	20
65	60	60	50	50	50	40	30	20	20
70	60	60	60	50	50	40	40	30	20
75	0	60	60	60	50	50	40	40	25
80	0	0	60	60	60	50	50	40	30
85	0	0	0	60	60	50	50	40	40
90	0	0	0	0	60	60	50	50	40
95	0	0	0	0	60	60	50	50	40
100	0	0	0	0	0	60	60	50	50
105	0	0	0	0	0	60	60	50	50
110	0	0	0	0	0	0	60	50	50
115	0	0	0	0	0	0	60	60	50
120	0	0	0	0	0	0	60	60	50
125	0	0	0	0	0	0	60	60	50
130	0	0	0	0	0	0	0	60	50
135	0	0	0	0	0	0	0	60	60
140	0	0	0	0	0	0	0	60	60
145	0	0	0	0	0	0	0	60	60
150	0	0	0	0	0	0	0	60	60
155	0	0	0	0	0	0	0	60	60
160	0	0	0	0	0	0	0	60	60
165	0	0	0	0	0	0	0	60	60
170	0	0	0	0	0	0	0	0	60
175	0	0	0	0	0	0	0	0	60
180	0	0	0	0	0	0	0	0	60
185	0	0	0	0	0	0	0	0	60
190	0	0	0	0	0	0	0	0	60
195	0	0	0	0	0	0	0	0	60
200	0	0	0	0	0	0	0	0	60
205	0	0	0	0	0	0	0	0	60
210	0	0	0	0	0	0	0	0	60
215	0	0	0	0	0	0	0	0	60
220	0	0	0	0	0	0	0	0	60
225	0	0	0	0	0	0	0	0	60
230	0	0	0	0	0	0	0	0	60
235	0	0	0	0	0	0	0	0	60
240	0	0	0	0	0	0	0	0	60
245	0	0	0	0	0	0	0	0	60
250	0	0	0	0	0	0	0	0	60
255	0	0	0	0	0	0	0	0	0
260	0	0	0	0	0	0	0	0	0
265	0	0	0	0	0	0	0	0	0
270	0	0	0	0	0	0	0	0	0
275	0	0	0	0	0	0	0	0	0
280	0	0	0	0	0	0	0	0	0
281	0	0	0	0	0	0	0	0	0

INSULATION THICKNESS FOR R210 STEEL STRUCTURE

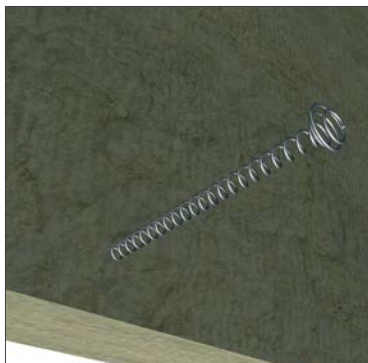
Fire resistance period 210 minutes									
Design temperature [°C]	300	350	400	450	500	550	600	650	700
Section factor [m ⁻¹]	Thickness in mm of fire protection material to maintain steel temperature below design temperature								
47	50	50	50	40	40	30	20	20	20
50	50	50	50	50	40	40	25	20	20
55	60	60	50	50	50	40	40	25	20
60	60	60	60	60	50	50	40	40	25
65	0	0	60	60	60	50	50	40	40
70	0	0	0	0	60	60	50	50	40
75	0	0	0	0	0	60	60	50	50
80	0	0	0	0	0	0	60	60	50
85	0	0	0	0	0	0	60	60	50
90	0	0	0	0	0	0	0	60	60
95	0	0	0	0	0	0	0	60	60
100	0	0	0	0	0	0	0	0	60
105	0	0	0	0	0	0	0	0	60
110	0	0	0	0	0	0	0	0	60
115	0	0	0	0	0	0	0	0	60
120	0	0	0	0	0	0	0	0	0
125	0	0	0	0	0	0	0	0	0
130	0	0	0	0	0	0	0	0	0
135	0	0	0	0	0	0	0	0	0

INSULATION THICKNESS FOR R240 STEEL STRUCTURE

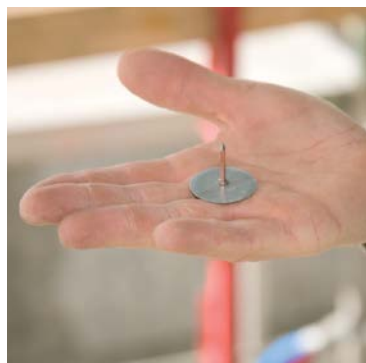
Fire resistance period 240 minutes									
Design temperature [°C]	300	350	400	450	500	550	600	650	700
Section factor [m ⁻¹]	Thickness in mm of fire protection material to maintain steel temperature below design temperature								
47	60	60	50	50	50	50	40	25	20
50	60	60	60	60	50	50	50	40	20
55	0	0	60	60	60	60	50	50	40
60	0	0	0	0	0	60	60	60	50
65	0	0	0	0	0	0	0	60	60
70	0	0	0	0	0	0	0	0	60
75	0	0	0	0	0	0	0	0	60
80	0	0	0	0	0	0	0	0	0



PAROC XFS 001 Fire spring



PAROC Head Pin



INSTALLATION

- 1** The insulation is fastened by PAROC Head Pin or welding steel pins (Ø 2,7 mm) with washers (Ø 30 mm).
- 2** Pins are fastened maximum 50 mm in from each joint.
- 3** The maximum distance between fasteners is 360 mm.
- 4** For flanges with a width of 180 mm or below minimum one pin should be used placed in the centre of the board. In total this means 4 pins per insulation board.

For flanges with a width above 180 mm two pins should be used placed in each side 50mm in from the edge of the flange, corresponding to a total of 8 pins per insulation board.

- 5** Behind the horizontal joints in each side board, a 100 mm wide butt joint board shall be placed. Consisting of the same insulation board with the same thickness and in the height fitting the space between the upper and lower flange. The butt joint board is mounted to each side boards with special fire springs PAROC XFS 001. The springs should be placed in the centre of each profile with a height of 400 mm or lower and for profiles with a height above 400 mm two springs should be placed in the 1/3 point and 2/3 point.
- 6** Both boards are cut over-sized so they fit tight. No glue or equal is needed.
- 7** All edges of the profile are fully covered by the boards.
- 8** At installation on beams the boards on the sides shall cover the bottom layer boards and not vice versa.
- 9** No openings in fire protection are allowed.

○ Fire protection made by inorganic stone wool is very durable. Maintenance is only needed if there will be some impact damage. Damage is very easy to repair just by changing the current part of the insulation.

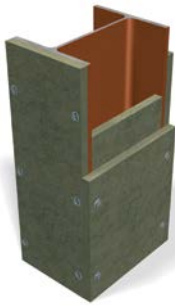
○ PAROC Fire Steel Protect system shall be used in indoor spaces with normal indoor temperature and moisture conditions.

INSTALLATION OF PAROC® FIRE STEEL PROTECT

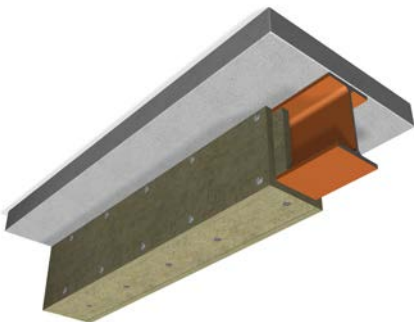
GENERAL



1 Cut the installation pieces with a width of 100 mm and a length suitable to the profile with 2–3 mm extra length. Use always the same thickness of slab as used for the current profile.



2 Press the pieces of insulation between the flanges behind a coming joint.



WELDING



The insulation is fixed by using PAROC Head Pins or steel pin/washers. The pin is an Ø 2,7 mm with washer Ø 30,0 mm.



The pin length used is chosen 2–3 mm greater than the insulation thickness.



The boards should form a solid corner on the steel profile. No steel shall be visible.

Follow the instructions at the welding equipment to install the pins properly.

Foresee that the pins are properly fastened. The pins should be possible to bend aside (without insulation) and stay fastened.



The welding is done by PAROC Pin Welding Device – or equal.

See instructions on page 9.

RHS-PROFILES

Insulation should be fixed to the top of RHS profiles by butt welding.

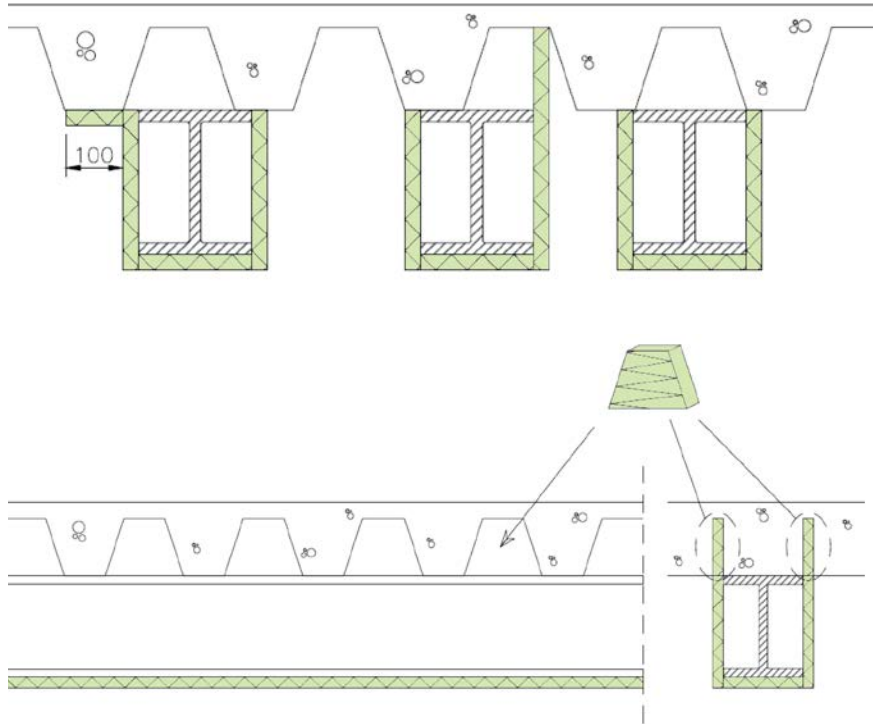
The steel pins are fixed at intervals of less than 360 mm and less than 50 mm from joints in the insulation.

CONNECTION DETAIL

When the fire protected steel beam is mounted under a composite steel deck the following construction details shall be taken into account. It should be noted that fire protection of the load-bearing trapezoidal steel sheet and fire protection of the load bearing beam shall always be considered separately.

The fire protection board has to be installed tightly against the deck. No gaps are allowed.

In case of a gap in the corrugation of the adjoining corrugated deck, a fire insulation of width of 100 mm shall be fixed adjacent to the fire insulating board on the profile (Fig. 1).



If the profile is installed across the corrugated steel deck, precut pieces of the same insulation are pressed into the corrugation before the installation of the fire insulation on the vertical side of the profile. Pieces should be glued to the metal sheet with fire resistant sealant or similar.

PRODUCT INFORMATION / PAROC FIRE STEEL PROTECT

Property	Standard
Width x Length: 600 mm x 1200 mm	EN 822
Thickness: 20–120 mm Tolerances: T5; EN12 162	EN 823
Reaction to Fire: A1	EN 13 501-1
Thermal conductivity: $\lambda_D = 0,038 \text{ W/mK}$	EN 13 162



APPLICATION

Fire protection slab PAROC Fire Steel Protect is non-combustible stone wool insulation for use as glue-free fire protection for steel structures.

PACKAGE TYPE

Plastic Packages on a Pallet or Loose Product on a Pallet.

Paroc is one of Europe's leading manufacturers of energy-efficient and fire-proof insulation solutions. Throughout our 80-year history, we have earned a reputation for high product performance, technical expertise and sustainability among builders of single-family homes, architects, contractors, dealers and industrial builders. The cornerstones of our operations are customer and personnel orientation, constant innovation, profitable growth and sustainable development. Paroc products include building insulation, technical insulation, marine and offshore insulation, and acoustic products. The products are manufactured in Finland, Sweden, Lithuania, Poland and Russia. Paroc has sales and representative offices in 14 European countries.



Building Insulation offers a wide range of products and solutions for all traditional building insulation. The building insulation products are mainly used for the thermal, fire and sound insulation of exterior walls, roofs, floors and basements, intermediate floors and partitions.



Sound absorbing ceilings and wall panels for interior acoustic control, as well as industrial noise control products, are available in the range.



Technical Insulation products are used for thermal, fire and sound insulation in HVAC systems, industrial processes and pipe work, industrial equipment as well as shipbuilding and offshore industry.



The information in this brochure describes the conditions and technical properties of the disclosed products, valid at the time of publication of this document and until replaced by the next printed or digital version. The latest version of this brochure is always available on the Paroc website. Our information material presents applications for which the functions and technical properties of our products have been approved. However, the information does not mean a commercial guarantee. We do not assume liability of the use of third party components used in the application or the installation of our products. We cannot warrant the suitability of our products if used in an area or conditions which are not provided in our information material. As a result of constant further development of our products we reserve the right to make alterations to our information material at any time.

PAROC is a registered trademark of Paroc Group.

May 2018
© Paroc Group 2018
2074TIEN0518

PAROC OY AB
Technical Insulation
P.O. Box 240, FI-00181 Helsinki, Finland
Tel. +358 46 876 8000
Fax +358 46 876 8002
technical.insulation@paroc.com
www.paroc.com

A MEMBER OF PAROC GROUP